



The Village View

Newsletter of the Glencarlyn Citizens' Association since October 1952

April 2018

Glencarlynites Turn Out for Stream Cleanup Day



Isla Wearmouth removes trash

Photo: Gerald Martineau

Glencarlyn residents turned out to help remove trash and recyclable materials from Four Mile Run on March 10. Twenty neighborhood residents, supplemented by

25 members of Cub Scout Pack 632, led by Glencarlyn resident Brandon Hamel, were part of the 30th Annual Four Mile Run Stream Cleanup.

Between 10:00 a.m. to 12:00 p.m. they were in Glencarlyn Park picking up trash and debris in the stream and along its banks.

The Glencarlynites, and Cub Scouts were among more than 120 volunteers who worked various sections of Four Mile Run. Altogether, the cleanup crews collected more than 1,000 lbs of material from the

See **Stream** on page 4

Arlington Schools in Focus at the April 2 Meeting

From finding seats for an expanding student body, to keeping the budget in the black are some of the key issues the Arlington County School Board deals with.

Board Chair Barbara Kanninen is scheduled to talk about challenges facing the school system at the April 2 Glencarlyn Citizen's Association meeting at 7:30 p.m. in Carlin Hall.



School Board Chair
Barbara Kanninen

Glencarlyn residents and the neighborhood association have expressed concern about the potential for a new high school being built nearby and shifting school boundaries. Also of concern — whether the Virginia Hospital Center property on Carlin Springs Rd. might be earmarked for school use after the county takes possession of the site.

See **Kanninen** on page 9

Vihstadt Speaks on County, Local Issues

It could be awhile before Arlington County begins putting the urgent care center site on Carlin Springs Rd. to a new county use.



John Vihstadt (

Photo: Gerald Martineau

It was thought the county might take ownership of the site this summer. However the County Board is considering extending that timetable, according to board member John Vihstadt. That would give the site's current owner, Virginia Hospital Center, some breathing

See **Vihstadt** on page 4

Elections, Invasive Species On May 7 GCA Agenda

Elect new GCA officers and sign up to help with the June 1-2 Glencarlyn Days at the May 7 GCA meeting, 7:30 p.m. in Carlin Hall. Also learn what to do about those pesky and destructive invasive plants and animals in the area.

On the Inside

President's Corner	P. 2
Glencarlyn Day Planning	P. 3
Ball-Sellers Spring Events	P. 3
Neighborhood Speed Study	P. 6
School Walk Zones	P. 7
Kids for Hire	P. 111
Neighborhood Activities	P. 12

GCA Meeting
April , 7:30 p.m.
Carlin Hall

Glencarlyn Yard Sale is Coming: ORGANIZERS NEEDED

A Glencarlyn community-wide Yard Sale is being planned for either May or June and a few good neighbors are needed to organize and run the sale.

Depending on help available, it can be held on May 12, May 19 or June 23. Save some of those spring cleaning items for the sale. Glencarlyn will handle advertising: signs and notices in the newspaper

and on Craig's list. We will also print a map showing the participating homes.

Residents can also set up their own table at Carlin Hall, 5711 4th St South, by reserving a space. If you areIf you are willing to be an organizer, want to reserve a space, or for any questions please contact **Julie Lee 808-384-4954 or jfblee@aol.com**

President's Corner

Friendships for a Lifetime



By Julie Lee
President, Glencarlyn Citizens' Association

I was recently in Colorado skiing, where I spent time with my friend Karen. We have been friends a long time.

Karen was my family babysitter when I was growing in Glencarlyn. Karen and her mom moved to 2nd St. in the late '50's and she attended Glencarlyn Elementary, Kenmore and Wakefield. Karen spent hours in Glencarlyn Library, the old white wooden building then. It was her sanctuary.

She got to know my grandmother, the children's librarian. My grandmother asked if she would be willing to babysit her grandchildren. Karen wasn't especially fond of the idea, but she was fond of my grandmother and couldn't say no. Thus, our lifelong relationship began.

As a young girl I adored Karen and we stayed in touch after she left for college ("pen pals"). Ultimately, as we grew older, the 7 year age difference went away. I attended her wedding, she attended mine. I even babysat for her daughter.

We have remained friends and get together whenever possible. For the past several years we have met in Colorado in March. Who could have imagined this wonderful friendship that has lasted over 55 years?

When my mother moved to Glencarlyn in 1943, not only did she meet her future husband, she also met her best friend. Marge Marvin lived on 2nd St, my mom on 4th St. They played together, were Girl Scouts together, graduated from W-L, raised their families, and were **best friends for life** until Marge's passing a few years ago.

My best friend from elementary school through college was Emma Johnson. We still keep in touch. Her mother Gloria still lives on 4th St.

With our fast-paced lives, in this constantly changing world, how incredible to live and grow in a community where lifetime friendships are born. This is the beauty of our Glencarlyn neighborhood. One where we have no through streets, surrounded and insulated by parkland, with a neighborhood library, a community center, a church, and schools within walking distance until high school.

This isn't "Mayberry," but it may be as close as one can get in the suburbs of Washington DC.

Spring and Summer are upon us. Get out, meet and spend time with your neighbors. Encourage your children to play with each other. Use the June 1-2 Glencarlyn Day activities to cultivate relationships.

There could not be a better way to make friends than by dancing in the street at the Block Party, eating pancakes at the Breakfast in the Park and marching in our Parade. You might be making a friend for life. How exciting is that?!

Take the George Washington's Forest Walking Tour

Join the George Washington's Forest Walking Tour on Saturday, April 21. Learn more about the history of Glencarlyn and Glencarlyn Park. The tour begins at 1:30 p.m. at the Ball Sellers House, 5620 3rd St. South. See the Ball-Sellers story on page 3 for more details.

GCA Officers

email: gca_exec@glencarlyn.org or
president_gca@glencarlyn.org

President

Julie Lee 808-384-4954

Vice President

Alex Hecht 703-671-9171

Secretary

Randy Krug 703-379-0835

Treasurer

Tim Aiken 703-820-0084

Neighborhood Contacts

Neighborhood Conservation Delegates

Kathy Reeder 703-820-3933

Peter Olivere (Alt.) 703-626-2520

Civic Federation Delegates

Peter Olivere 703-626-2520

Tim Aiken 703-820-0084

Sue Campbell 703-931-4098

John Chandler 202-999-2816

Doug LeRoy (Alt.) 703-845-9657

Jeff Liteman (Alt.) 703-575-4412

Brian Cavey (Alt.) 703-820-0242

Vacant

Carlin Hall Reservation

Arl.Parks & Recreation 703-228-1805

Glencarlyn.org Webmaster

Doug LeRoy 703-845-9657

Village View Editor

Bill Pritchard 703-931-2168

gcaeditorial@gmail.com

Area Chair/Block Captain Coordinator

Peter Olivere 703-626-2520

Glencarlyn Email Updates

Doug Leroy 703-845-9657

gcaupdates@glencarlyn.org

Volunteer Coordinator

Julie Lee 808-384-4954

gc_volunteers@glencarlyn.org

Glencarlyn Apparel

gca125yrs@glencarlyn.org

Glencarlyn Web Site

www.glencarlyn.org

Carlin Hall

5711 S. 4th St.

Planning Underway for the June 1-2 Glencarlyn Day

Our annual Glencarlyn Day preparations are underway! We have a full schedule again this year, as we have listed below.

The success of our Glencarlyn Days activities depends on your participation. As you can see, we have lots of activities planned, so **we need lots of volunteers**. Look for more information in the May Village View.

If you can help in any way, especially with the Parade or the House Tours, or have any questions, please contact Julie Lee directly at jfblee@aol.com or call 808-384-4954.

Schedule of Events

Friday June 1

- Potluck Supper— outside at Carlin Hall
- Block Party - With live music!

Saturday June 2

- Pancake Breakfast in Glencarlyn Park

- Glencarlyn Parade - The theme this year is “Paw Patrol on Parade”.
- Moon Bounce and Sno Cones at Carlin Hall
- Ball Sellers House - Visit the oldest house in the County and see their new exhibits.
- Tours of the Community Garden – Tour the various sections of the garden with a master gardener or just stop by to ask questions about your own gardening problems.
- Hot Dog Roast at St John's - It just wouldn't be Glencarlyn Day without hot dogs on a charcoal grill!
- Library Open House - Stop by the library and see the displays of historic Glencarlyn material. Join in the special activities kicking off the summer reading program.
- House Tours - We will have several homes on the house tour.

Ball-Sellers House Ready to Spring into Post-Winter Events

The Ball-Sellers House will be the center of a great season for visitors to the site in the Glencarlyn neighborhood, said Annette Benbow of the Arlington Historical society .

Here's a peak at 2018 events tied to the historic house - portions of which predate the American Revolution.

April 7: Opening Day: The house opens for the season from 1 p.m.-4 pm for all Saturdays from April through October. Docents will be in colonial costume serving colonial era sweet treats and beverages.

April 21: George Washington's Forest History Walking Tour: The tour starts at the Ball-Sellers House at 1:30 p.m., led by local historian Kevin Vincent. Before the Revolutionary War, George Washington bought 1,200 acres of forest in what is now Arlington. After the war, he returned and surveyed his property.

Walk in his footsteps and see survey markers used by him, historic springs, and the site of a mill built by his step-grandson. The two hour tour covers about one and half miles on generally easy terrain. Wear good walking shoes and bring water. No charge but donations to the Ball-Sellers House will be gratefully accepted.

May 12: Wisteria and Wine! Enjoy the Ball-Sellers House's 100 year old wisteria and learn about wine-making in the colonial era and today. (Just in time for Mothers Day)

Also this spring, archaeologists will begin unearthing more Glencarlyn history on the property. Volunteers are welcome.

To learn more, email BSH@arlingtonhistoricalsociety.org. More Ball-Sellers House activities are coming, so watch this space or go to www.arlingtonhistoricalsociety.org.

About the March Village View

From GCA President Julie Lee

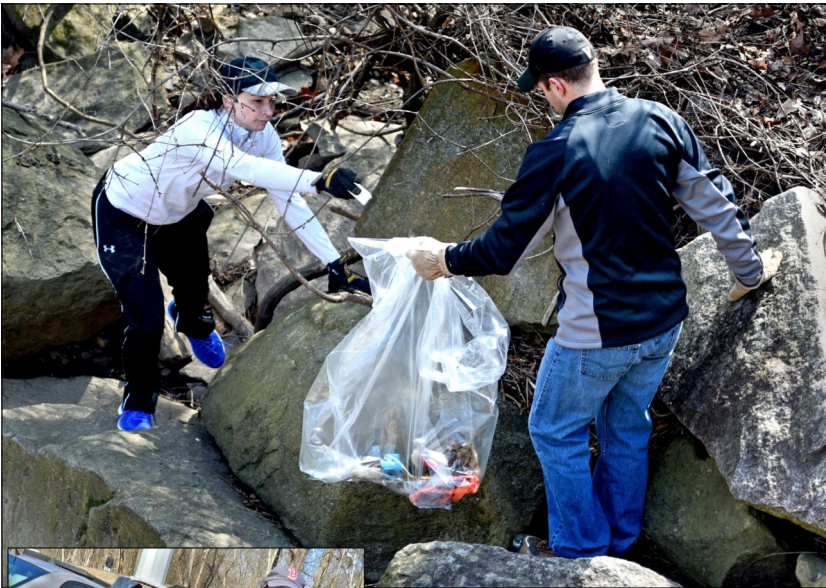
As many of you know there was an unexpected emergency concerning the printing and distribution of the March Village View. When we suddenly lost our printer, we were afraid we would be unable to deliver a printed March Village View. However, several people stepped forward with suggestions and help.

Under the superb leadership of our editor, Bill Pritchard, with major assistance by Pete Olivere, we located a new printer and had the March edition 'on the street' just barely behind schedule. Initially there was a little confusion, and I apologize for any inconvenience this caused our area and block coordinators, who get your Village View to your front door. Everyone adapted, put their heads down and got our newsletter out. Thank you all.

Subscribe to Glencarlyn Updates

Get a weekly email with information about neighborhood's fast breaking news and reminders about major activities.

To subscribe, send your name, email address and home address to gcaupdates@glencarlyn.org.



Clockwise from the left: Barbara Martinez (in hat) with Nathaniel and Lydia Bolen; Alyssa and Ben Bouffard climb the rocks filling their trash bag; Mike Krug, Alexis Krug, (middle) and Isla Wearmouth; Alex Hemel, trash bag in hand, jumps over 4 Mile Run

Photos by Gerald Martineau

Stream from page 1

stream—most recyclable. Arlington County Park Rangers sponsor the cleanup. Ranger Christina DeMariano said there were more volunteers this year than in the recent past when it was rainy on cleanup day. With the sun shining and balmy 45-50 degree temperatures, the Glencarlyn team gathered more

than 45 bags of trash to help beautify and clean the neighborhood park. After the clean up effort, the Glencarlyn Citizens' Association (GCA) hosted a hot dog and marshmallow roast for volunteers. Some participants noted that the area along the

stream bank was cleaner than in the past, thanks to neighbors who pick up rubbish during daily walks along the stream.

Among the items pulled from the stream by various cleanup teams were

six bicycles and a 55-inch flatscreen television, DeMariano said.

Impressed by the volunteers' enthusiasm, Arlington Parks and Recreation will "look for ways in future to harness their enthusiasm for the good of the county," department public relations chief Susan Kalisc told The Village View.



Vihstadt from page 1

room to find site in southern Arlington for relocating the urgent care facility.

"I think it's likely that we will be giving them a little extra time to look for other space," Vihstadt said, speaking at the Glencarlyn Citizens' Association March 5. The extension would likely be in one-year increments, he added.

The county needs space for uses such a bus parking, the board member noted, adding and there's not a lot of land available in Arlington.

GCA has repeatedly expressed concern about the potential county uses of the urgent care site. Association officers have

stressed the need for a full study of any potential for its impact on local traffic. .

Members at the meeting told Vihstadt that a traffic study must be part of the overall planning for the site's use.

"We want a full assessment," Alex Hecht, GCA vice president, told the board member.

In other matters important to Arlington residents, Vihstadt said the County Board in trying to close a \$20.5 million shortfall is cutting \$8.4 million in expenditures which will mean shedding 50 county employee positions.

Twenty of those job slots are vacant, but 30 current employees will lose their jobs, he said.

Vihstadt continues, next page

View from the Garden

Spring Ephemerals at the Library

By Elaine Mills,
Master Gardener

Photos by Elaine Mills

The Glencarlyn Library Community Garden is home to a special category of plant referred to as “ephemerals.” While they are perennials, returning to the garden every year, they emerge in early spring, produce flowers and fruit, and then fade away before the heat of summer.

Although short-lived, these spring-blooming species are stunning in groups or as specimen flowers. When their foliage dies back, other perennials, annuals, or ferns can fill the spaces they vacate.

The first ephemeral to appear in the garden is the common snowdrop (*Galanthus nivalis*), a bulb native to Europe and Asia, which blooms in February.

This diminutive plant has narrow grayish-green leaves and nodding bell-shaped white flowers marked with a band of yellowish green.

Snowdrops grow well under deciduous trees and will naturalize to form large colonies.

Another sign of spring is Virginia Bluebells (*Mertensia virginica*) a native wildflower that blooms for about three weeks from March to April.

This clump-forming plant has floppy, bluish-green leaves and bell-like flowers that begin as pink buds and turn light blue as they mature. When planted en masse, bluebells create a lovely woodland carpet that attracts butterflies, moths, and hummingbirds.



Common snowdrop



Virginia Bluebells

Bloodroot (*Sanguinaria canadensis*), a native member of the poppy family, derives its common name from the reddish-orange sap that oozes from the cut rhizome or stems. It has showy white flowers with 8 to 16 petals and measures up to 3 inches across. Each flower stalk is wrapped by a deeply-



Bloodroot

scalloped grayish-green leaf that unfolds as the short-lived flowers fade. Various insects feed on the pollen, but no nectar is produced.

Wild bleeding heart (*Dicentra eximia*), like its more familiar Asian cousin, Old Fashioned Bleeding Heart, is also a member of the poppy family. Although similar in appearance, it is somewhat

shorter, has lacier, fern-like foliage, and its heart-shaped flowers are smaller and longer.



Wild Bleeding Heart

It can bloom from mid-April into early summer but will die back in hot, dry weather. Its floral nectar provides sustenance to long-tongued native bees and migrating hummingbirds.

A native ground cover, Mayapple (*Podophyllum peltatum*), has deeply-lobed umbrella-like leaves that unfurl to create a dense mat. Hidden beneath, on two-leaved plants, are nodding white flowers that bloom beginning in April and develop into the lemon-shaped fruits for which the species is named.



Mayapple

These fruits attract box turtles in the garden and can be used for preserves and jellies.

Vihstadt

Vihstadt noted a decrease in commercial tax revenue — there are millions of square feet of empty office space. As a result more of the tax burden has shifted to residential. The county strives for a 50-50 split, but the balance is now 48 percent commercial and 52 percent residential.

Vihstadt also talked about ongoing planning for Four Mile Valley. The initiative is being designed to “help guide public and private investment, including County operations” and preserve open space, among other elements.

He said the county has decided not to ask the small businesses, such as auto repair shops, along Four Mile Run to leave as the area is redeveloped. Vihstadt said they are “long term ethnic businesses that provide employment for new Americans.”

On other matters, Vihstadt said the county is working with the state legislature on getting a “dedicated funding stream” for the Metro system.

He also noted that the County has postponed renovating the picnic shelter in Glencarlyn Park until after Glencarlyn Day.

Study: Few Speed Violators On 4th and Kensington

Capt David Dailey, ACPD

Commander, Special Operations Section

Following Capt. Quigley's attendance at the Nov 2017 GCA meeting, the ACPD conducted a traffic study (on 4th St. South and Kensington St.) in December 2017 and discovered the following:

- The combined average speed for both lanes was 23 mph.
- Approximately 5.5 percent of vehicles per day were exceeding the speed limit by 5-10 mph.
- Approximately 3.6 percent of vehicles per day were exceeding the speed limit by more than 10 mph. This is considered to be a low percentage of enforceable violations.
- 98.3 percent of the vehicles were traveling the posted speed limit or slower.

Based on this data, police will continue with random/rotating enforcement. This information was also shared with Arlington Traffic Engineering. Recognize that

Speed continues on facing page

Winds Topple Tree on Glencarlyn Home

There was "a very loud sound" and "I was pretty sure it was a tree," Dan Felsenheld said.

He was right. A large oak tree toppled onto the Felsenheld home at 5415 3rd St. South during a powerful windstorm around 11:15 p.m. Friday, March 3.

None of the four members of the Felsenheld family was hurt. The tree landed on the roof of the kitchen, which occupies an extension of the home.

The tree "has got to be over 100 years old," Felsenheld said. And it has been



A large oak felled by high winds rests on the kitchen roof

Photo by Gerald Martineau

"relatively healthy," he added.

Save the date!

Sunday, May 6

10 a.m. to 3 p.m. (Rain or Shine)

for the Glencarlyn Library Garden's

Spring Celebration and Plant Sale

featuring native and locally propagated plants and a variety of vendors offering hand-crafted jewelry, nature-themed t-shirts, mushroom logs and local honey

Planting for Pollinators and More

By Rachel Tolman

Park Naturalist, Long Branch Nature Center

In recent years, studies show the insect population is on the decline, with habitat loss, herbicides and pesticide use, as well as mysterious diseases effecting all sorts of six legged workers from monarchs to honey bees.

Give your local pollinators, and garden, a boost by planting native plants. Planting natives help enrich the environment by providing food and habitat for many species beyond pollinators.

The local plants have evolved with our local insects, birds, and wildlife and they rely on each other for survival. Many of our native plants are also hosts for caterpillars, which turn into butterflies, and are an important food source for growing chicks in the nest. Flowers can provide nectar for moths, butterflies and hummingbirds and pollen for bees, flies

and beetles. These animals in turn help pollinate plants to make fruits and seeds. Those seeds in turn will be eaten by many birds and mammals in the fall and help them survive the winter.

Spring is a great time to stock up on pollinator friendly plants.

Animals that rely on flowers and nectar for food need to eat spring, summer, and fall.

Planting a variety of plants with different bloom times ensures that pollinators will have a food source all year long and you'll have an attractive 3 season garden to boot!

Check out the Long Branch Native Plant sale for a list of great pollinator friendly plants to try. You can pre-order your plants online thru April 24 or attend our one day sale on May 5 from 1:00-4:00p.m. at Long Branch

Nature Center. Go to: <https://registration.arlingtonva.us>, <https://parksrlingtonva.us>



Photo: Bill Pritchard

Ideas, News Tips?

The **Village View** is always looking for **articles, stories or photos** about people or activities in the neighborhood or schools. Also needed are events to include in the **calendar**. If you would like to contribute, send your submission to *The Village View* editor at gcaeditorial@gmail.com. Just remember the **Five Ws**: Who, What, When, Where, and How.

Task Group to Gather Public Input on School Walk Zones

By Barbara Martinez and Christy Hiers

In advance of opening two new elementary schools by fall 2021, Arlington County Public Schools (APS) has embarked on process to revise boundaries for all elementary schools.

The first step is to review elementary school walk zones. APS is asking whether those walk zones can be expanded in conjunction with safety improvements for walkers.

Glencarlyn sits within the one-mile potential walk zone for two elementary schools: Carlin Springs and Campbell. Currently, Glencarlyn students walk to Carlin Springs and receive bus transportation to Campbell.

We, both parents of elementary-age children, are the Glencarlyn Citizens' Association representatives to the Walk Zone Task group. We are charged with soliciting and gathering feedback

from the community on potential expansions to these schools' walk zones.

APS has a webpage with extensive information on this initiative and a survey asking which planning units could potentially be added to each school's walk zone. The page is at <https://www.apsva.us/elementary-school-boundary-change/>

APS staff will present draft recommendations to the school board on April 12. They also will present recommendations on which school buildings should host option school programs with an eye toward reducing busing costs. The school board will act on these proposals this spring with an eye toward completing the elementary school boundary process in November.

Contact us at contact us with questions or feedback. Barbara Martinez (barbara.martinez@gmail.com) and Christy Hiers (christyhiers@gmail.com).

Speed

these results may differ from what you observed. On streets with on-street parking, with no other context, traffic can appear to be moving faster than it really is.

Officers being trained and certified in the use of speed measuring devices, they spend a significant amount of time learning how to make accurate visual speed estimates — not an easy skill.

If you have any other traffic related questions, please call or email me at 703-228-4045.

For questions about other issues in your neighborhood, please contact the 3rd District Commander, Captain Adrienne Quigley at 703-228-4097 or via e-mail at aquigley@arlingtonva.us. For non-emergencies that require an officer to be dispatched, please call the non-emergency number, 703-558-2222.


THE SPRING MARKET IS HERE!

We are helping clients prepare their homes to sell
and helping buyers find their new home.
We can help you too. Call us today!

Integrity · Experience · Results

Betsy Twigg, Anne Cronin & Linda Murphy

Betsy Twigg: 703.967.4391
Anne Cronin: 703.597.3082
Linda Murphy: 703.850.0190

 Follow/Like us on Facebook for housing market updates @balrealtors

Washington Fine Properties
4100 Fairfax Drive, Suite 250
Arlington, VA 22203



TOWN & COUNTRY MOVERS, INC.

Local, Long Distance & International Moving & Storage
Commercial & Residential

Missy Jamieson & Kate Hougen

Moving Consultants

(703) 216-2451 Direct

(703) 560-8600

MandK@townandcountrymovers.com



The Missy and Kate Team

5% Discount to Glencarlyn residents who call Missy and Kate

1750: Ball-Sellers House 1887: Glencarlyn
1892: Carlin Hall 1923: Burdett Library

2009: Glencarlyn's first... finest...only gym

MAKE YOUR OWN HEALTH...FITNESS HISTORY!

**Boot Camps (Mid-Late Mornings...Evenings)
Personal Training**

Michaelfitlife.com 571-217-7794

Ireland's four courts

Let Us Host Your Next Event

Birthdays * Retirements * Baby Showers *
Engagements * Happy Hours * Office Lunches

**Private or Semi-Private space available
with NO ROOM FEE**

2051 Wilson Blvd, Arlington, VA

703-525-3600 - catering@irelandsfourcourts.com



kids eat free

Sunday - Friday 4pm-7pm & Saturday 10am-7pm

*up to 12 years old *one complimentary kids meal with each purchase of an adult entree

The Spring real estate market has arrived, and the supply of homes is increasing so far in March and so is buyer activity, with an absorption rate of 1.5 months. It's a seller's market for sure and bidding wars do happen, although not at the pace they did a few years ago. Sellers have options on pricing strategies and most will view initial realistic positioning in a value range as the best strategy to attract educated buyers, who have easy access to available market data. Days on market is influential and impacts how buyers approach an offer. They don't have much leverage in the first few weeks and won't present lowball offers on a fresh commodity.

Mortgage rates increased in early March, with current fixed rates averaging 4.5%. According to Freddie Mac, the average mortgage rate from the 1970s-2000 was about 7%, the average rate from 2000-2008 was 6% and since 2008 they've been between

3.5 to 4%. Freddie Mac currently predicts that rates will reach about 5% by the end of 2018.

About 1/3rd of recent purchases in the area were made with less than 20% down payment. Conventional loans are available at 3%, 5%, 10% and 15% down. Some local lenders have special programs with 3% to 5% down using conventional financing and eliminate the monthly mortgage insurance payment. Other options are to avoid PMI (private mortgage insurance) are 80/20 (zero down), 80/15/5 (5% down) and 80/10/10 (10% down).

With low home inventory and strong buyer demand, the reputation of the mortgage lender is a critical component of any transaction. A pre-approval letter from a strong local lender is a key factor for winning a competitive bid. Some lenders can close a loan in 2 to 3 weeks, which is attractive to sellers. Need some advice on mortgage lenders and how to compete? Let's talk!



Casey O'Neal
Associate Broker
703-217-9090

casey@caseyoneal.com
RE/MAX Allegiance
www.caseyoneal.com

**FREE Notary Service for
Glencarlyn Residents!**

***Before you place your
home on the market - I
can help you be as ready
as possible. Contact me
for a Room by Room
Review and I can share
quick and easy tips to
either make your house
show like a model or sell
it "as-is".***

Kanninen from page 1

At the Board's annual organizational meeting last July, Kanninen said the panel is committed to tackling student population growth, in part by planning for a possible fourth comprehensive high school. But she did not mention a specific site for a new facility.

Other issues raised at the Board meeting included:

- Making elementary and middle school boundary changes,
- Moving forward, collaboratively, on development of the Ed Center and Career Center sites.

On the issue of gun violence in schools, the Board said March 8 that "we respect our teachers and do not support arming them." It urged state and federal legislators to "move quickly to pass legislation that more effectively regulates access to firearms and expands resources for mental health support and treatment."

Kanninen's visit will be an opportunity to ask questions about the potential for new schools in the area, whether the Virginia Hospital Center property on Carlin Springs Road might be earmarked for school use after the county takes possession of the site, and other issues.

Kanninen an environmental lawyer and author of childrens' books, joined the board in 2015. Her term ends on Dec. 31. She is running for re-election.

Computer & Technology **WE CAN Worries & Woes? HELP!**

Free meetings 1st & 4th Wednesdays, 7 pm,
Carlin Hall Community Center

www.patacs.org

Visitors welcome!

Subscribe to Glencarlyn Updates

Get a weekly email with information about the neighborhood's fast breaking news and reminders about major activities. To subscribe, send your name, email address and home address to gcaupdates@glencarlyn.org.



Gary FitzGibbon
Serving Northern Virginia for 31 years
RE/MAX Gateway
703-876-5347



For professional real estate assistance & service you'll love, call Gary for all your buying and selling needs!

Gary's Clients Say...

"I recently sold a property in Falls Church and chose Gary as the realtor. As it turned out he was a helper I wouldn't want to do without. I was amazed that not only was he super at marketing & sales, but he knew and guided me with contractors to get the house ready for market. I feel Mr. FitzGibbon is the most knowledgeable, courteous, & dedicated person I had the pleasure of working with in real estate." -William D Minnick

For a **free** market analysis on what **your** home is worth in today's market, contact me at gary@garyfitzgibbon.com. I specialize in your neighborhood and would welcome the opportunity to help you in your home buying or selling process.

VISIT MY WEB PAGE AT: www.garyfitzgibbon.com

EMAIL ME AT: gary@garyfitzgibbon.com

www.facebook.com/GaryFitzGibbon.Realtor

R & M Cleaning Services

We are licensed and insured!

- *RELIABLE
- *EXPERIENCED
- *GOOD REFERENCES
- *FLEXIBLE SCHEDULING
- *REASONABLE RATES



WE BRING OUR OWN EQUIPMENT

*Free-in-home Estimate
Weekly/Bi-weekly/Monthly Or Occasional
Move-in or Move-out
Call Maryen or Raul at
703-321-5335*

Where are you spending your summer?

How about the GLEN FOREST COMMUNITY POOL

**Nestled in 6 acres of wooded bliss!
Picnic area with grills, partially shaded baby pool,
Limited concessions and more.**

Contact AnnMarie at 703-731-7773 or
Karen at 571-259-1413 for more info
or glenforestcommunity@gmail.com



Visit our website www.gfcpool.org or
on Facebook - Glen Forest community pool



BUCK & ASSOCIATES
REAL ESTATE SINCE 1976

2519 Wilson Blvd • Arlington, VA 22201



Looking to buy?

We've got homes!

Looking to sell?

We've got buyers!

Billy Buck | 703-524-9000 | 24/7 Text 703-810-7563



Presented by the Arlington
Chamber of Commerce



www.buckrealtors.com

Still the #1 Remodeling Contractor in Arlington

Pulling more permits in Arlington than any other contractor



Specializing in Arlington Homes

GET A FREE QUOTE TODAY

703-536-0900 | CookBros.org

Glencarlyn Kids for Hire

Maggie Buchanan, 16 - Red Cross certified for baby sitting and will pet-sit. — 703-929-4036.

Gage Buchanan, 14 - lawn mowing, weed trimming, leaf raking and will pet-sit. — 703-929-4036.

Leo Dudley, 13 - dog sitting and dog walking. — 202-748-4577 or leoleum@gmail.com.

Cassidy Green, 14 - babysitter — (571) 317-4351, greencolleen@gmail.com.

Caroline Grotos, 12 - babysitting/mothers helper, dog walking, pet and plant sitting. — 703-998-0114, egrotos@msn.com.

Mira Hougen, 12 - babysitting (Red Cross certified), pet sitting, plant sitting, mother's helper. — 703-867-2933 (E), 703-867-2934 (K).

Max Jamieson, 13 - babysitting/Mother's Helper, Pet Care, Yard Work — 703-402-8162 (Max) 703-819-3074 (Missy).

Will Jamieson, 12 - babysitting/Mother's Helper, Pet Care, Yard Work — 703-819-3074.

Laine Kelly, 14 - babysitting (Red Cross certified), mother's helper, pet sitting/walking. Call or text — 703-647-0175.

Lindsay Kelly, 17 - babysitting, mother's helper, pet sitting/walking, call or text — 703-623-6986.

Brady Krohl, 12—lawn mowing/yard work, pet care and babysitting/Mother's Helper — 703-347-3026, 703-862-4938, chandikrohl@hotmail.com.

Lily Elaina Link, 16 - dog walking, pet sitting, plant watering, babysitting (Red Cross certified) — 571-212-4179.

Braeden List, 16 - babysitting (Red Cross certified), dog walking, pet sitting — 571-279-9020.

Maya McCarthy, 13 - Red Cross certified for babysitting & pet sitting. Call/text — 703-400-9440 or email mayam1215@gmail.com.

Tiara McGowan-Jones, 15 - Pet sitting, dog walking, and plant sitting. — 301-325-9285.

Leyla Gormann, 15 - babysitting, pet sitting, dog walking, plant sitting, and mother's helper. — 301-325-9285

Isaiah Phifer, 14 - pet sitting, dog walking - contact — 585-309-0881 or sasimons21@gmail.com

Ellie Trumpfheller, 12 - pet sitting, dog walking, Red Cross certified in babysitting and mothers helper — 571 214-2049 or lynnetrumpfheller@gmail.com - 202-431-1743

Harry Wolfson 16 - mowing lawns, dog walking, snow shoveling and baby sitting — 703-820-6191 or 703-419-0840.

If you are Glencarlyn resident, high school age or younger and would like to be listed as available for neighborhood jobs, please send your name, age, phone number, and job(s) you would like to perform to The Village View at gcaeditorial@gmail.com.

Parents, please provide your contact information to the same e-mail address.

BINGO

12	18	41	47	61
7	26	39	54	70
4	27		49	63
5	23	35	58	73
3	30	32	52	75

BINGO NIGHT

Saturday, April 21 from 7 to 9 pm

\$5 for 2 cards and a raffle ticket.

Prizes will be awarded.

Refreshments will be available.

EARTH DAY PARTY

Sunday, April 22 - 2:30 to 4 pm - **FREE!**

Fun activities, snacks and more!

All will get a surprise to take home!

Children under 8 need to be accompanied by an adult

St. John's Episcopal Church



Sunday Worship Services

8 am and 10 am

415 S. Lexington Street - Arlington, VA 22204

Sunday Christian Education

Adults 9 am - Youth 10:00 am

703-671-6834

See St. John's website for more information on these and other events!

stjohnsarlingtonva.org

Visit the GCA Website

For additional information about what is going on in the community, photos from various events, and GCA meetings minutes go to www.glencarlyn.org.

Activities in the Glencarlyn Neighborhood

[link to the GCA Calendar](http://www.glencarlyn.org) at the www.glencarlyn.org for GCA sponsored events..

GCA Events/Activities

Saturday, April 7 — Ball-Sellers House opens for the season from 1-4 pm for all Saturdays from April through October.

Saturday, April 21.— George Washington's Forest History Walking Tour: Starting at the Ball-Sellers House at 1:30.

Sunday May 6 — Spring Celebration and Plant sale.

Long Branch Nature Center

**625 S. Carlin Springs Rd.,
Arlington, 22204**

Call 703-228-6535 for information

Hours

Tuesday through Friday - 10 a.m. - 5 p.m.

Saturday — 10 a.m. - 5 p.m.

Sunday — 1 - 5 p.m.

Activities require pre-registration and fill up early. For more information go to the Arlington Parks and Recreation guide *The Snag* at arlingtonparks.us/snag

Northern Virginia Bird Club Walk

Wednesday, Apr. 4, 8:30 - 11am

Adults. Join members of the Northern

Virginia Bird Club for informal walks through Long Branch and Glencarlyn Parks in search of resident and migratory birds. Experienced and beginning birders welcome. Bring binoculars and field guides if you have them. No registration required.

R.I.P. - Remove Invasive Plants at Long Branch!

Sunday, Apr. 15, 2 - 4pm

Adults, teens, and families ages 8 and up. Restore habitat and increase species diversity in Arlington. Work parties are held every month. Meet at Long Branch Nature Center. **Free.**

Night Senses Campfire

Saturday, Apr. 21, 7 - 8pm

Families. Register children and adults; children must be accompanied by a registered adult. Lots of fun at the Long Branch Amphitheater. activities include stories, special animal guests, games, songs and S'mores. Meet at Long Branch Nature Center. **\$5**

Spellbinders Story Fest

Sunday, Apr. 22, 3 - 4pm

Families ages 4 and up. Register children and adults; children must be accompanied by a registered adult. The Arlington

Spellbinders will unleash the power of oral storytelling with favorite tales from around the world. **Free**

Glencarlyn Library

703-228-6548

Hours

Monday and Thursday 10 a.m. - 9 p.m.

Tuesday and Wednesday 1 p.m. - 9 p.m.

Friday and Saturday 10 a.m. - 5 p.m.

Closed Sunday

**Needlework Group 2nd & 4th
Thursdays - 6:30 p.m.**

St John's Episcopal Church

703-671-6834

Sunday Service — 8 & 10 a.m.

415 S. Lexington St. 22204

Bingo Night, Saturday, April 21 7 - 9 pm

Earth Day Party, April 22 2:30 - 4 pm

Please Pay Your 2017 - 2018 GCA Dues-\$15

Your dues to the Glencarlyn Citizens' Association help fund the Glencarlyn Day events, holiday parties, picnics, *Village View* newsletter, the *glencarlyn.org* website, our neighborhood directory and much more. Dues are for July 2017 through June 2018. If you did not pay your dues on Glencarlyn Day please send them in now.

Name _____ Phone _____

Address _____ email _____

Please add me on Glencarlyn Updates since I am not currently getting them _____ (Yes or leave blank)

I would like to volunteer for one of the upcoming Glencarlyn events _____ (Option to add event name)

Make checks payable to **GCA** — send to — Tim Aiken, Treasurer, 111 S. Kensington St., Arlington, VA 22204.

If you aren't sure if you paid, contact Tim at 703-820-0084. Dues increase to \$15 beginning in the 2017-2018 fiscal year.