



# The Village View

Newsletter of the Glencarlyn Citizens' Association since October 1952

March 2019

## Effort Underway to Include 4<sup>th</sup> St S. Improvement Project in 2019 Budget

The 4<sup>th</sup> St S street improvement project (5600 and 5500 blocks) may still be submitted for county funding approval in 2019.

In last December's issue of *The Village View* it was reported that this project would not be funded due to the significant reduction in the Neighborhood Conservation (NC) Program's budget. But the program staff is working to submit the project later this year. The project remains GCA's top NC priority for 2019 funding.



4th St. S decline (2018)  
Photo: Gerald Martineau

Status updates will be provided in *The Village View*. The 2<sup>nd</sup> St S street improvement project (5700 block of 2<sup>nd</sup> St S and 100 block of S Kensington St) should be ready to begin construction in 2019. This project was funded by the county in 2014 but was delayed due to the contractor's performance issues on other county projects.

The original contract has been terminated and the project is being rebid.

See **Street Work** on page 4

## Spring Fun Coming on April 6

By Julie Lee

Come join in the first **Spring Fun** event at Carlin Hall and Glencarlyn Library Saturday April 6- 10 a.m.-12 noon.

This is for all members of the community. There will be activities for children of all age groups from pre-school to junior high. That includes planting seeds and painting. Children's Librarian Clea Counts will offer a story time.

We will have beverages, including coffee, and snacks.

For the teenagers and adults, there will be a scavenger hunt, where teams will go around the neighborhood taking photos of items on their list. We hope couples without children will join in the fun.

See **Fun** on page 7

## Threatening Messages Found on Urine Filled Bottles in Glencarlyn

Beverage bottles believed to be filled with urine and with messages threatening local officials written on them have been found in the Glencarlyn neighborhood.

Up to five of these have turned up since last September, according to residents. Those familiar with the incidents say that some were found in the area of the Glencarlyn Branch Library

See **Bottles** on page 6

## Tree Trim Trouble

Church members thought they were doing a neighborly deed by cutting back an aging oak they believed was on church property. But it turned out that the tree was on county land.



See the story on page 3

## On the Inside

President's Corner	P. 2
County Ombudsman	P. 3
Church apology for tree cut	P.3
STOP signs	P. 4
Four-Mile Run Cleanup	P. 4
View from the Garden	P. 5
Sparrow Pond Meeting	P.8
Preserving Glencarlyn trees	P. 9
Kids for Hire	P. 11
Neighborhood Activities	P. 12

## GCA Meetings

### County Board Chairman Dorsey Featured at March GCA Meeting



Dorsey

Speak directly with Christian Dorsey, chairman of the Arlington County Board, at the GCA meeting Monday, March 4. Chairman Dorsey will share his insight with Glencarlyn residents, and will answer questions and address concerns. This is also a chance to thank the County Board for the many things they get right.

Dorsey was elected to the board in 2015. and became chairman in 2019. He also represents Northern Virginia jurisdictions as a principal

See **Meetings** on page 3

# President's Corner

## A Caring, Mindful Community



By Julie Lee

### President, Glencarlyn Citizens' Association

Ever needed your car battery jumped? Needed your trash cans put back by your house? Needed to borrow that proverbial cup of sugar? And ALWAYS there was a neighbor there to help.

One of the wonderful things about living in a small community like Glencarlyn is that we are able to know our neighbors and look out for each other. Whether it is our snow shovel brigade or our Village View block captains, neighbors are coming by our

homes, and in the process are certainly making sure everything seems fine.

We have a diverse neighborhood where families with small children are right beside more seasoned residents. We have more and more new families moving into the neighborhood. It is good to recognize the children on your block. Know the people on your street who are living alone.

As the weather gets nicer and we are outside, introduce yourself to those you see. When you are out walking your dogs, or pushing a stroller, or going for your run - be aware of your surroundings, notice change. We all notice when things look different. You may want to knock on your neighbor's door, or give them a call if something doesn't look quite right. If you see something suspicious it may be necessary to call the Arlington Police Non-Emergency number (703)-558-2222. As we are told—if you see something, say something.

I am not writing this to alarm anyone, and I hope that is not an unintended consequence. I thought this might be a good time for us to remember that we are never alone in Glencarlyn. We are a caring, mindful community.

There are people supporting us in ways that we may not even know. I see it over and over. And in addition to this informal safety net we have created, there is structured reinforcement such as Arlington Neighborhood Villages. Many Glencarlyn residents belong to this wonderful volunteer driven non-profit organization that allows us to remain in our homes longer. Take the time to learn more about Arlington Neighborhood Villages.

And now I am going to make a gratuitous plug and ask for YOUR support as GCA holds our first ever **Spring Fun** event on Saturday, April 6, 10 a.m.-12 p.m. Read more about it on Page 1. Please volunteer to help children's librarian Clea Counts and me with the children's activities. Most importantly, I need your creative minds to **help me plan these activities**. I look forward to your calls and emails. It really does take a village. How blessed we are to live in one.

## Editor Sought

GCA is looking for a new editor for its monthly neighborhood newsletter, **The Village View**. This 12-page publication covers issues important to the Glencarlyn community, from school boundaries to traffic safety, and features notable happenings and individuals in the neighborhood. *The Village View* also covers events from Glencarlyn Day to the Winter Light celebration. The latest community building activity is Spring Fun, set for April 6. The newsletter comes out nine times a year with a break in summer and early fall. If you are interested, contact Julie Lee at 808-384-4954 or email: [jfblee@aol.com](mailto:jfblee@aol.com).

## GCA Officers

email: [gca\\_exec@glencarlyn.org](mailto:gca_exec@glencarlyn.org) or  
[president\\_gca@glencarlyn.org](mailto:president_gca@glencarlyn.org)

### President

Julie Lee 808-384-4954

### Vice President

Alex Hecht 703-671-9171

### Secretary

Noah Cohnssen 703-229-5532

### Treasurer

Tim Aiken 703-820-0084

## Neighborhood Contacts

### Neighborhood Conservation Delegates

Kathy Reeder 703-820-3933

Peter Oliver (Alt.) 703-626-2520

### Civic Federation Delegates

Peter Oliver 703-626-2520

Tim Aiken 703-820-0084

Sue Campbell 703-931-4098

Dixie Duncan 703-919-0570

Doug LeRoy (Alt.) 703-845-9657

Jeff Liteman (Alt.) 703-575-4412

Brian Cavey (Alt.) 703-820-0242

Ryan Donlan (Alt.) 215-704-0463

### Carlin Hall Reservation

Arl. Parks & Recreation 703-228-4747,  
Option 2

### Glencarlyn.org Webmaster

Doug LeRoy 703-845-9657

### Village View Editor

Bill Pritchard 703-931-2168  
[gcaeditorial@gmail.com](mailto:gcaeditorial@gmail.com)

### Area Chair/Block Captain Coordinator

Peter Oliver 703-626-2520

### Glencarlyn Email Updates

Doug Leroy 703-845-9657  
[gcaupdates@glencarlyn.org](mailto:gcaupdates@glencarlyn.org)

### Volunteer Coordinator

Julie Lee 808-384-4954  
[gc\\_volunteers@glencarlyn.org](mailto:gc_volunteers@glencarlyn.org)

## Glencarlyn Web Site

[www.glencarlyn.org](http://www.glencarlyn.org)

### Carlin Hall

5711 S. 4<sup>th</sup> St.

## Call for GCA Officer Nominations

The Glencarlyn Citizens' Association by-laws call for a nominating committee to create a slate of Glencarlynites willing to serve as GCA officers. The committee will present a slate at the April 1st meeting and elections will be held at the May meeting. The new terms begin in June.

**If you are willing to serve as a GCA officer**, please contact Jeff Liteman, Nominating Committee Chairman. Let Jeff know what office you're interested in. "We need volunteers willing to

devote their time and energy over the course of a year," Liteman said. Some of the incumbents may be willing to continue, while other offices may become vacant, he added.

A full list of current officers (elected and appointed) can be found on page 2 of this issue of **The Village View**. For further information phone Jeff at 202-246-5485, email him at [jm@his.com](mailto:jm@his.com), or contact any other member of the executive committee

## Church Apologizes for Extensive Trimming of a Tree on County Land

The pastor of St. John's Episcopal Church has apologized for the trimming of a large pin oak tree prior to removal that she and church members believed was on parish property. But they discovered after the work began that a "significant portion" of the oak was on county land.

A group of church members, including the pastor, the Rev. Ann Barker, decided to have the tree, located near the intersection of Lexington and 4<sup>th</sup> St. South, taken down because two tree services that examined it recommended removal. They acted also because neighbors raised concerns that falling branches, or a falling tree, could cause injury and property damage, the Rev. Barker, said in a letter addressed to GCA president Julie Lee.



Trimmed pin oak  
Photo: Gerald Martineau

"These concerns were magnified by the violent windstorm experienced in Arlington last spring and other major storms in the past year," she added.

The church stopped the tree work after Glencarlyn residents raised concerns about its location, Rev. Barker said. "Looking at the county's interactive map of the property lines with an aerial image overlay, it appears that a significant portion of the tree is on county property", she said.

"We should have let the community know what was planned," she wrote. In a similar letter to county officials, Rev. Barker said: "What we clearly missed doing during our discussion was verifying the exact location of the tree."

See **Tree** on page 6

## County's Answer Man Talks Traffic, Other Issues at GCA Meeting



Ben Aiken

Ben Aiken, the County's residential ombudsman and director of constituent services, said there are lots of ways to describe his job.

Relationship manager, problem solver, facilitator, intermediary: "All of that doesn't fit neatly on a business card, so you can call me whatever you like," he said at the Feb. 4 GCA meeting.

"I'm here really to help. I'm here to answer questions, and that's what I do on a day to day basis," Aiken said.

Among the questions he addressed at the meeting related to traffic and pedestrian safety on Carlin Springs Rd.—particularly for Kenmore Middle School students.

Aiken said the county is working on several improvements, including high visibility intersections, striping, curb bump-outs and median islands — places to slow traffic "where there are logical points of pedestrian crossing."

Some at the meeting expressed frustration with the seemingly slow pace of making Carlin Springs Road safer.

See **Aiken** on page 6

### **Meetings** from page 1

member on the board of the Washington Metropolitan Area Transit Authority where he serves as chair of the Finance and Budget Committee. He is also one of three Arlington members on The Northern Virginia Transportation Commission.

### **April 1: General Burdett, Glencarlyn Library**

Learn about Gen. Samuel Burdett, one of the founders of Glencarlyn, and about Glencarlyn Branch Library—the first library in Arlington. It was begun with Gen. Burdett's donation of books and land.

Karl Van Newkirk of the Arlington Historical Society, will provide an informative talk on Burdett, the neighborhood and the library Monday, April 1, at 7:30 p.m. in Carlin Hall 5711 4<sup>th</sup> St S.

### **Monday, May 6: Wheels to Africa**

Neighbor Dixie Duncan will tell us all about Wheels to Africa (WTA), a charity begun by her son Winston which provides bikes to needy communities in Africa and America.

**GCA meetings are held at 7:30pm, in Carlin hall 5711 4<sup>th</sup> St S.**





Electronic traffic signs operating recently at 4th St. S and Lexington St. — an intersection notorious for drivers who disregard the stop sign. As the auto approaches about a half block away red and blue lights flash atop the sign flash and it alternatively reads “come to complete,” “stop,” “or get ticket.”

*Photos: Gerald Martineau*

### **Street Work** from page 1

When this two-block project is ready for paving, 2<sup>nd</sup> St S from Carlin Springs Rd to S Jefferson St will be paved. Using input from the October questionnaire on Glencarlyn Neighborhood Conservation Priorities, the GCA Executive Committee selected the 1<sup>st</sup> St S dead end by Glencarlyn Park as the neighborhood’s pilot environmental project.

The pilot will explore improvements using resources such as neighborhood volunteers, Parks and other county departments, and community groups, rather than relying only on NC funding. Kathy Reeder, Glencarlyn’s NC Advisory Committee delegate,

will reach out soon to the residents who volunteered on the questionnaire to help with environmental projects.

Ten neighborhood residents volunteered on the October questionnaire to help update Glencarlyn’s Neighborhood Conservation Plan. Reeder will contact those volunteers soon to schedule a planning session.

Please contact her at [kathleenreeder@comcast.net](mailto:kathleenreeder@comcast.net) if you are interested in helping with environmental projects or the Neighborhood Conservation Plan update, but did not submit a questionnaire. Results of the October questionnaire are available on the [Glencarlyn.org](http://Glencarlyn.org) website under the Neighborhood Conservation tab.

## **Four Mile Run Stream Cleanup Set for March 9**

By Pete Olivere

The Glencarlyn Citizens’ Association will host a hot dog and marshmallow roast in conjunction with the 31<sup>st</sup> Annual Four Mile Run Stream Cleanup on Saturday, March 9, from 9 a.m. to noon.

This is a great outing for families as well as an opportunity for students and groups to earn community service hours. We will meet for the cleanup at the footbridge over Four Mile Run by the dog park. This is a new location because of the construction of a new shelter at the 3<sup>rd</sup> Street and Harrison.

This is near picnic shelter #1 which is accessed from the road into the park at the end of 4<sup>th</sup> St. S. Trash bags and plastic gloves will be available for volunteers starting at 9 a.m. The area we will clean runs from under the Arlington Blvd. bridge to past the



*Isla Wearmouth picks trash from the stream in 2018*

*Photo: Gerald Martineau*

footbridge where we meet and up Long Branch Creek to the picnic shelter. Volunteers should wear long sleeve shirts and pants and, if you have them, work gloves and waterproof boots.

After the clean-up, the hot dog and marshmallow roast will be held at picnic shelter #1. Invite lots of friends to join in the fun.

If you think you may be attending, please let us know, so we can plan for the number of persons we will need to feed.

If you don’t have a chance to contact us, please show up anyway. We always have extra food.

We also can use a couple of people who can help with the food. For more information, contact Pete Olivere at 703-626-2520 or [polivere@aol.com](mailto:polivere@aol.com).

**Lost:** Blue iPhone on Dec. 20, 2018, on Kensington Street in front of the Glencarlyn Library. If you found it would you please contact [JoanKnitsFL@gmail.com](mailto:JoanKnitsFL@gmail.com)

# View from the Garden

## I See Differently Now



**By Alyssa Ford Morel**  
**Master Gardener**

Nearly 20 years ago, I had a life-changing surgery. Since adolescence, my vision had become progressively more near-sighted, and by my early thirties, my uncorrected vision was 20/800. Contacts or glasses were a constant necessity. When I read

without glasses, the pages of a large book would brush my nose when turned. Then a co-worker discovered that our agency's insurance would pay 100 percent of the newly popular LASIK surgery. Word spread through the office as one employee after another had the procedure, raving about the results. I became the twelfth member of our work team to undergo the treatment.

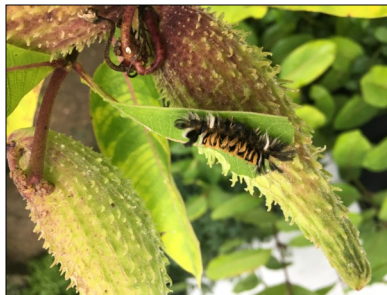
The result felt like a miracle. The day after my procedure I was gardening in my front yard (with safety glasses on to ensure no debris would damage the surgeon's work), unable to stop laughing with sheer amazement at how sharp everything looked. Passers-by gave me strange looks – which I could see!

More recently, I've had another change of vision, slower to manifest, but no less profound. In 2008, I attended a lecture by Dr. Douglas Tallamy about how suburban gardeners can make a significant positive impact on our environment by using native plants. His talk was full of fascinating facts and examples. It spoke to my long-held concern for the problems facing the natural world, and gave me hope that I could actually make a difference just by how I gardened – something I loved doing. I made a point to speak with Dr. Tallamy after the lecture and let him know that he had convinced me – I would be using native plants in the garden of the new home my husband and I had just purchased.

I started in with gusto, but limited knowledge of native plants. The American home landscape has been dominated by showy non-native plants, primarily from Asia, for decades, casting native plants as less available, less pest resistant and generally less known. I made rookie mistakes, not understanding that the fact that some plants have both native and non-native varieties (just because there are native viburnum doesn't mean all viburnum are native), or that it's not enough for a plant to be native to America – i.e., West Coast plants might not be right for Arlington. I also bought some plants from sources that I now realize were potentially spurious, possibly raiding wild areas of plant material instead of cultivating it responsibly. But I learned.

As I learned, so did a lot of other people. Dr. Tallamy's message has become part of a chorus of scientists singing the praises of native plants and the native insects, birds and other wildlife.

New studies keep adding evidence of the importance of a wide variety of native plants supporting the wildlife and natural systems that evolved in each area. Landscape architects and designers have embraced the beauty of native plants, using them in public and private spaces. Availability of native plants has exploded. More and more people are using native plants and seeing their virtue.



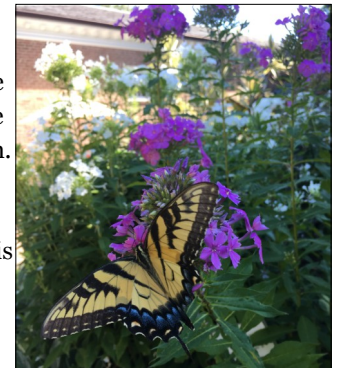
*Milkweed Tussock Moth Caterpillar on milkweed*

Now, as I look at Glencarlyn Library Garden's Monarch beds, while I see the beautiful blooms, I am seeking something more. What I am hoping for is a milkweed leaf that is half gone, and when I see that, I hunker down to look more closely under that half leaf for the Monarch caterpillar that ate it. Often, I'm tipped off to the exact location of the caterpillar by the scattering of frass (yes, the name for insect poop!) on leaves below the voracious caterpillar. I get excited about such things, because this is why we plant the milkweed, and it is beautiful to me.

### Photos by Alyssa Ford Morel

I was at the home of Wendy Mills, one of my fellow co-coordinators at Glencarlyn, and she showed me a cluster of spicebush, a lovely native shrub with lacy yellow flowers in early spring. She

pointed out holes in the leaves, slightly smaller than a dime, but cleanly cut on the edges. At first we were mystified, then the distinctive holes clicked into place in my brain. "You've got leaf-cutter bees," I exclaimed. "They found a great nesting source here in your garden. This is what you want!" Suddenly, the holes looked like jaunty polka dots to my eye. A problem transformed into a realized hope.



*Swallowtail butterfly on garden floss*

Unfortunately, my new understanding doesn't always reveal hidden beauty. Sometimes the opposite is true. Along with an appreciation of native plants, my understanding of invasive plants has grown.

Where I used to think of the vines growing so lushly through woods in summer as verdant and beautiful, I now see the English ivy, Porcelain berry and Japanese honeysuckle as destructive and out-of-control – a menace consuming our wild places. Each time

See **Garden** on page 6



### **Bottles** from page 1

and near Carlin Hall on 4th St.

A resident who found one by Carlin Hall last year described it as “a capped two liter juice bottle full of urine and covered in messages about public urination and other rants.”

“There is a big concern a lot of us have had...that (bottles were found) at a place where kids gather,” said Steve Young who found another bottle. Students wait for buses at the library and there is a day school operating out of Carlin Hall.



*One of the suspect bottles.*

*Photo: Steve Young*

Arlington Police were alerted about the incidents and officers spoke with residents. No suspects have been publicly identified.

Arlington Police Capt. Wayne Vincent speaking at the Feb. 4 GCA meeting, said it's not clear the incidents are a crime.

He also said that trying to find out who left the bottles via DNA testing only works if the person is a convicted felon whose DNA is on record.

ACPD advises reporting such incidents on the police non-emergency number (703)-558-2222.

### **Aiken** from page 3

One resident said that Carlin Springs Road is the only thoroughfare in Arlington allowing a 30 mph speed limit during school hours.

Aiken noted that traffic safety projects typically make tactical improvements, let data accumulate to use for further improvements and then make “incremental change over time that should change driver behavior” and make the area safer for pedestrians.

### **Garden** from page 5

I see the bright red berries of nandina, I think about their toxicity to Cedar Waxwings. Now when I see the lavender pendants of Asian wisteria, I also see trees girdled by the vine, strangled to an early demise.

Yellow carpets of Lesser celandine on the banks of Four Mile Run in spring speak of native ephemeral wildflowers crowded out by a muscular intruder.

### **Tree** from page 3

The church checked a county map and found that “a significant portion” of the tree is on county property.

As of press time, there was no indication what action the county would take, if any, regarding the tree cutting.

See [www.stjohnsarlingtonva.org/news/newsView.asp?NewsId=4096812282](http://www.stjohnsarlingtonva.org/news/newsView.asp?NewsId=4096812282) for the full text of the letters.

When I see invasive plants, my hands itch to cut, to dig, to remove – mostly to replace with natives. The trade of an invasive for a native makes me feel like I am helping to tip the scale a little, and put a bit of balance back in the world. I long for opportunities to plant Buttonbush, Serviceberry and PawPaw. The more I learn, the more interesting my world is, full of beauty, wonder and opportunity.

Yes, I see differently now.

**ENHANCED**  
REMODELING

**CUSTOM.  
CREATIVE.  
COMMUNITY.**

Enhanced Remodeling ...  
offering superior designs, builds, and  
service for more than 15 years.

**SERVING ARLINGTON'S  
UNIQUE NEIGHBORHOODS.**

**703-855-8638  
WWW.ENHANCEDRR.COM**



**Fun** from page 1

This is a great opportunity for neighbors new to the community to meet other neighbors. Activities will be at both Carlin Hall and the Glencarlyn Branch Library.

Join in the fun, celebrate spring, visit with your neighbors, and appreciate our community.

### Your Help is Needed!

We especially need volunteers to plan activities for the children. Please contact Julie Lee if you can assist with snacks or activities. Call 808-384-4954 or email: [jfblee@aol.com](mailto:jfblee@aol.com).

Or volunteer using the Sign-Up Genius:

[www.signupgenius.com/go/409084BAEAC2DA2FE3-spring](http://www.signupgenius.com/go/409084BAEAC2DA2FE3-spring).

## TOWN & COUNTRY MOVERS, INC.

Local, Long Distance & International Moving & Storage  
Commercial & Residential

**Missy Jamieson, CMC**

**Kate Hougen, CMC**

**Jean Horner**

*Moving Consultants*

(703) 216-2451 Direct • (703) 560-8600 Office

[MandK@townandcountrymovers.com](mailto:MandK@townandcountrymovers.com)



## The Missy and Kate Team

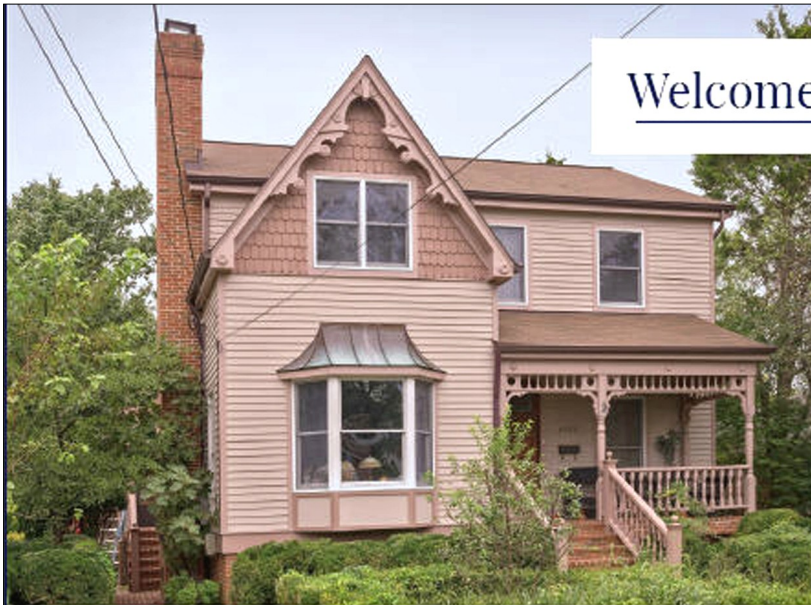
Another successful pool season comes to an end!

Thank You Glencarlyn residents for your support of the **Glen Forest Pool** Season 2018!

We look forward to seeing you again in May 2019.  
Visit us on Facebook - Glen Forest community pool  
or our website [glenforest.us](http://glenforest.us)

Incentives available for the 2019 season if membership paid in full by Dec 31, 2018!

Contact AnnMarie at 703-731-7773 or  
Karen at 571-259-1413 for more info



## Welcome to 5727 2nd Street South!

GLENCARLYN NEIGHBORHOOD

Welcome to this Victorian gem! Built in 1990, this home features Victorian era style and finishes including three fireplaces with vintage surrounds and mantels and extensive woodwork. The updated, eat-in kitchen has a vaulted ceiling, doors to brick floored sun porch and access to the private backyard. There are three large bedrooms including a main level bedroom. The master bedroom has a walk-in closet and bay window. The unfinished lower level, with large windows and 9-ft ceilings, offers incredible potential! Carlin Springs, Kenmore, Washington-Lee Schools. **Offered at \$895,000.**



### Betsy Twigg, Anne Cronin & Linda Murphy

703.967.4391 | 703.597.3082 | 703.850.0190

[btwigg@mcenearney.com](mailto:btwigg@mcenearney.com)

[acronin@mcenearney.com](mailto:acronin@mcenearney.com)

[lmurphy@mcenearney.com](mailto:lmurphy@mcenearney.com)

[www.BetsyTwigg.com](http://www.BetsyTwigg.com) | Integrity • Experience • Results



REALTORS®

Arlington Office

4720 Lee Hwy, Arlington, VA 22207

703.525.1900 | [McEneaney.com](http://McEneaney.com)

This is not intended to solicit the listings of other brokers.



## Subscribe to Glencarlyn Updates

Get email with information about neighborhood's fast breaking news and reminders about major activities. To subscribe, send your name, email address and home address to: [gcaupdates@glencarlyn.org](mailto:gcaupdates@glencarlyn.org)



## Sparrow Pond Slated for Restoration

A project to restore Sparrow Pond is being developed and the public is invited to provide input at a meeting on Thursday, March 14, at 6:30 p.m. in Carlin Hall.

The pond, located in Glencarlyn Park off the Four Mile Run/ WO&D trail, was developed in 2001-02. It has filled with sediment over the years.



*Sparrow Pond slated for rehabilitation*

*Photo: Gerald Martineau*

The project aims include restoring the pond's original depth, adding a sediment collection forebay to allow easier maintenance, maximizing water quality, and restoring habitat.

Contact Lily Whitesell, Arlington County stormwater outreach specialist, at 703-228-3042 or [lwhitesell@arlingtonva.us](mailto:lwhitesell@arlingtonva.us).

The project web site is at <https://projects.arlingtonva.us/projects/sparrow-pond-restoration/>.

## Ireland's four courts

### Let Us Host Your Next Event

Birthdays \* Retirements \* Baby Showers \*  
Engagements \* Happy Hours \* Office Lunches

**Private or Semi-Private space available  
with NO ROOM FEE**

2051 Wilson Blvd, Arlington, VA  
703-525-3600 - [catering@irelandsfourcourts.com](mailto:catering@irelandsfourcourts.com)



### kids eat free

Sunday - Friday 4pm-7pm & Saturday 10am-7pm

\*up to 12 years old \*one complimentary kids meal with each purchase of an adult entree

## How's the market?

Compared to the previous December, contract activity in Arlington was up 20% in December 2018. The Amazon announcement created a perfect storm – it fueled demand precisely at a time when inventory is seasonally low. In December 2018, inventory was about 40% lower than it was in September 2018 in Arlington. As expected, inventory was already headed down before the Amazon announcement, so when contract activity increased in the last six weeks of the year in Arlington there was already less inventory to fight over. Since we were then in a time of year where few listings come on the market, buyers were grabbing whatever was there.

And that squeeze resulted in absorption rates rarely seen. In Arlington, there were only 9 townhomes on the market at the end of December and there were 28 that went under contract – the absorption rate for townhomes priced under \$1,000,000 was 100%. Detached homes and condos

under \$1,000,000 had absorption rates north of 70%! Predictions are that these meteoric rates will not to continue to rise.

So far in January and early February the inventory level of homes is lower than past years. Lower to medium priced homes up to \$800,000 are attracting multiple offers since there are more buyers in those price ranges. Over the last three months, prices are up, and competition is fierce in Arlington and the close in surrounding Northern Virginia communities. Homes in turn-key condition get the most attention and sell quickly. In reality, all homes will sell when priced properly for their location, size and condition. In early February we are seeing a few more new listings hit the market which is a good sign for buyers. With prices rising, right now is a great time to buy with mortgage rates below 4.5% for a 30-yr fixed mortgage but could start going up again anytime.

Let's talk if you are curious about how you can optimize your real estate goals!



Casey O'Neal  
Associate Broker  
703-217-9090

[casey@caseyoneal.com](mailto:casey@caseyoneal.com)  
RE/MAX Allegiance  
[www.caseyoneal.com](http://www.caseyoneal.com)

FREE Notary Service for  
Glencarlyn Residents!

**Before you place your home on the market - I can help you be as ready as possible. Contact me for a Room by Room Review and I can share strategies for optimizing the presentation of your property with over three decades of experience.**



## Help Save Glencarlyn's Trees

By Nancy Stewart

Nearly every street was lined with stately silver maples. Elms, oaks, cedars and evergreens soared overhead. That time was long ago. Disease and neglect have taken their toll on Glencarlyn's tree canopy.

But it wasn't too long ago when one corner house boasted six towering oaks, all gone now thanks to yet another scourge: aggressive development. County and private properties in Arlington are being clear-cut to squeeze in room for one more house or

one more parking space. Just look at the new housing that rings Ballston for evidence of dense development where mighty trees once proudly stood. Now that kind of aggressive development has begun to carve its way through our neighborhood, with its few remaining tall trees.

As a result, the Glencarlyn Citizens Association is forming a committee to propose a variety of steps residents can take to preserve and improve the neighborhood's tree canopy — and lifestyle. Cramming houses in every corner leads to higher population density and more cars on narrow, already-crowded, pothole-

See **Save** on page 11

### Glencarlyn's First, Finest & Only Gym

*5617 5th Road S.*

Walk a few blocks and  
improve your fitness by miles.

*Best personal training & BEST YOU.*

[www.michaelfitlife.com](http://www.michaelfitlife.com)



### Computer & Technology **WE CAN** Worries & Woes? **HELP!**

Free meetings 1<sup>st</sup> & 4<sup>th</sup> Wednesdays, 7 pm,  
Carlin Hall Community Center

[www.patacs.org](http://www.patacs.org)

**Visitors welcome!**



### Gary FitzGibbon

*Serving Northern Virginia for 32 Years*

**RE/MAX Gateway**

**(703) 963-8707**



**FOR SALE  
Near You!**

*Your Neighborhood is  
My Speciality!*

**Call me to get yours SOLD too!**

**VISIT MY WEB PAGE AT: [www.garyfitzgibbon.com](http://www.garyfitzgibbon.com)**

**EMAIL ME AT: [gary@garyfitzgibbon.com](mailto:gary@garyfitzgibbon.com)**

**Like me on Facebook [www.facebook.com/GaryFitzGibbon.Realtor](http://www.facebook.com/GaryFitzGibbon.Realtor)**

**Buck & Associates**  
Est. 1976

**BILLYBUCK  
& COMPANY**

**CALL US TODAY!**

**703.524.9000**

**Looking to sell?  
We've got buyers!**

**Looking to buy?  
We've got homes!**



🏠 703-524-9000 • [www.buckrealtors.com](http://www.buckrealtors.com) • 2519 Wilson Blvd. Arlington, VA 22201

# Still the #1 Remodeling Contractor in Arlington

Pulling more permits in Arlington than any other contractor



***Specializing in Arlington Homes***

**GET A FREE QUOTE TODAY**

**703-536-0900 | [CookBros.org](http://CookBros.org)**



## Glencarlyn Kids for Hire

**Gage Buchanan**, 16 - lawn mowing, weed trimming, leaf raking and will pet-sit. — 703-929-4036.

**Lucas Codispoti**, 16 - babysitting, walking and care of dogs/cats, and general yard work. — 703-310-8715

**Leo Dudley**, 13 - dog sitting and dog walking. - 202-748-4577 or [leoleum@gmail.com](mailto:leoleum@gmail.com).

**Elise Eclarinal**, 10 - mother's helper, 703-772-4429.

**Cassidy Green**, 16 - babysitter — 703-969-6643, or [greencolleen@gmail.com](mailto:greencolleen@gmail.com).

**Connor Green**, 13 - babysitting. — 703-969-6643, or [greencolleen@gmail.com](mailto:greencolleen@gmail.com)

**Holly Porter & Gaby Colston**, 11 - Mothers helper, plant sitting, dog walking, Pet feeding — 571 215-0922

**Caroline Grotos**, 12 - babysitting/mothers helper, dog walking, pet and plant sitting. — 703-998-0114, [egrotos@msn.com](mailto:egrotos@msn.com).

**Mira Hougen**, 14 - babysitting (Red Cross certified), pet sitting, plant sitting, mother's helper. — 703-650-8334 (E), 703-867-2934 (K).

**Max Jamieson**, 13 - babysitting/mother's helper, pet care, yard work — 703-402-8162 (Max) 703-819-3074 (Missy).

**Will Jamieson**, 12 - babysitting/mother's helper, pet care, yard work — 703-819-3074.(Max) 703-819-3074 (Missy).

**Laine Kelly**, 14 - babysitting (Red Cross certified), mother's helper, pet sitting/walking. Call or text — 703-647-0175.

**Brady Krohl**, 16 - lawn mowing/yard work, pet care and babysitting/Mother's Helper — 703-347-3026, 703-862-4938, [chandikrohl@hotmail.com](mailto:chandikrohl@hotmail.com).

**Lily Elaina Link**, 16 - dog walking, pet sitting, plant watering, babysitting (Red Cross certified) — 571-212-4179

**Braeden List**, 16 - babysitting (Red Cross certified), dog walking, pet sitting — 571-279-9020.

**Maya McCarthy**, 13 - Red Cross certified for babysitting & pet sitting. Call/text — 703-400-9440 or email [mayam1215@gmail.com](mailto:mayam1215@gmail.com).

**Tiara McGowan-Jones**, 15 - Pet sitting, dog walking, and plant sitting. — 301-325-9285.

**Isaiah Phifer**, 14 - pet sitting, dog walking - contact 585-309-0881 or [sasimons21@gmail.com](mailto:sasimons21@gmail.com)

**Ellie Trumpfheller**, 12 - pet sitting, dog walking, Red Cross certified in babysitting and mothers helper — 571 214-2049 or [lynnetrumpfheller@gmail.com](mailto:lynnetrumpfheller@gmail.com) - 202-431-1743

**Harry Wolfson** 16 - mowing lawns, dog walking, snow shoveling and baby sitting — 703-820-6191 or 703-419-0840.

*If you are Glencarlyn resident, high school age or younger and would like to be listed as available for neighborhood jobs, please send your name, age, phone number, and job(s) you would like to perform to The Village View at [gcaeditorial@gmail.com](mailto:gcaeditorial@gmail.com).*

**Parents, please provide your contact information to the same e-mail address.**

### R & M Cleaning Services

*We are licensed and insured!*

- \*RELIABLE
- \*EXPERIENCED
- \*GOOD REFERENCES
- \*FLEXIBLE SCHEDULING
- \*REASONABLE RATES



#### WE BRING OUR OWN EQUIPMENT

*Free-in-home Estimate*  
*Weekly/Bi-weekly/Monthly Or Occasional*  
*Move-in or Move-out*  
**Call Maryen or Raul at**  
**703-321-5335**

**Save** from page 9  
 laden village streets.

Although no state or county laws protect trees, there are measures individuals and groups can take. Initial ideas range from establishing, publicizing and promoting voluntary guidelines for developers working in Glencarlyn to conducting annual tree planting days, thereby making it easy and low cost for residents to replenish and restore the canopy. In fact, some other neighborhoods are already sponsoring such events. Interested? Please plan on attending a committee meeting at 7 p.m., Tuesday March 12, at the home of Stuart and Nancy Davis, 5524 Fourth St. South. If you cannot make the planning meeting, please volunteer by emailing your intention to serve to [nmdaviswriter@aol.com](mailto:nmdaviswriter@aol.com).



## St. John's Episcopal Church

- Mar. 5 Shrove Tuesday Pancake Supper** - Everyone is welcome - 6 - 7:30  
 Prices are \$5 for adults, \$3 for children 6-12 and free for children under 6.
- Mar. 5 Book Club** - Eligible by Purvis Sittenfeld - 7:30
- Mar. 6 Ash Wednesday**  
 Ashes to Go at Ballston Metro Station - 7:30 - 8:30 am & 5 - 6 pm  
 Holy Eucharist and Imposition of Ashes in church - noon & 7:30 pm
- Sat. Mar. 16 Family Game Night** Hot chocolate and popcorn provided – Free - 7 - 9 pm

**Sunday Worship Services**  
 8 am and 10 am

**Sunday Christian Education**  
 Adults 9 am — Youth 10 am

415 S. Lexington Street Arlington, VA 22204

703-671-6834

[stjohnsarlingtonva.org](http://stjohnsarlingtonva.org)



# Activities in the Glencarlyn Neighborhood

[link to the GCA Calendar](http://www.glencarlyn.org) at the [www.glencarlyn.org](http://www.glencarlyn.org) for GCA sponsored events..

## GCA Events/Activities

**March 9**—Four Mile Run Spring Cleanup and Hot Dog Roast.

**Saturday, April 6**—Glencarlyn Spring Celebration. Volunteers needed.

**625 S. Carlin Springs Rd.,  
Arlington, 22204**

## Long Branch Nature Center

**Call 703-228-6535 for information  
Hours**

Tuesday through Friday - 10 a.m. - 5 p.m.

Saturday — 10 a.m. - 5 p.m.

Sunday — 1 - 5 p.m.

Activities require pre-registration and fill up early. For more information go to the Arlington Parks and Recreation guide *The Snag* at [arlingtonparks.us/snag](http://arlingtonparks.us/snag)

### Wake Up Spring Campfire

**Friday, Mar. 8, 6 a.m.- 7 p.m.**

Families. Register adults and children; children must be accompanied by a registered adult. The whole family is invited to the Long Branch amphitheater for lots of old-fashioned fun. Activities may include stories, special animal guests, games, songs and S'mores. Meet at Long

Branch Nature Center. **\$5.**

### Weenie Roast Campfire

**Sunday, Mar. 17, 5 p.m.- 6 p.m.**

Families ages 4 and up. Register children and adults; children must be accompanied by a registered adult. The family is welcome to an old-fashioned weenie roast. The nature center will provide the dogs, buns, topping and sides. Bring your own drink. **\$7.**

### Turtle First Aid

**Saturday, Mar. 2, 10am - 5pm**

Adults. Need CE credits or want to learn about local turtles? Join rehabilitators and vets in this six-hour class to learn the basics of care for rescued local turtles. Morning session: Turtle Care. Afternoon session: Turtle First Aid with veterinarians. Includes hands-on diagnosing with live turtles. To register go to [wildliferecueleague.org](http://wildliferecueleague.org). Bring snacks and lunch. Teens ages 15 and up welcome, but must be accompanied by a registered adult. **\$35** covers both sessions.

### Tiny Tots

Ages: **18 - 35 months** with adult. Each program has a theme for exploring and incorporating the park and its wildlife. Adults must remain with children during the entire program. **\$5**

**Tuesday, Mar. 19, 10a.m. - 10:45 a.m.**

**Friday, Mar. 29, 10 a.m. - 10:45 a.m.**

**Saturday, Mar. 30, 10 a.m. - 10:45 a.m.**

## Preschool

Ages 3 to 5. Preschoolers can actively explore their natural world. Adults must remain with children during the entire program. **\$5**

**Tuesday, Mar. 19, 1 p.m.- 2 p.m.**

**Weds., Mar. 20, 10:30 a.m. - 11:30 a.m.**

**Thursday, Mar. 28, 10:30 a.m. 11:30 a.m.**

**Saturday, Mar. 30, 12 - 1 p.m.**

## Glencarlyn Library

703-228-6548

### Hours

Monday and Thursday 10 a.m. - 9 p.m.

Tuesday and Wednesday 1 p.m. - 9 p.m.

Friday and Saturday 10 a.m. - 5 p.m.

Closed Sunday

**Under Twos Storytime, Mondays, 10:30 a.m.**

**Needlework Group 2nd & 4th Thursdays - 6:30 p.m.**

## St John's Episcopal Church

703-671-6834

**Sunday Service — 8 & 10 a.m.**  
415 S. Lexington St. 22204

# Please Pay Your 2018 - 2019 GCA Dues-\$15

Your dues to the Glencarlyn Citizens' Association help fund the Glencarlyn Day events, holiday parties, picnics, *Village View* newsletter, the [glencarlyn.org](http://glencarlyn.org) website, our neighborhood directory and much more. Dues are for July 2018 through June 2019. If you did not pay your dues on Glencarlyn Day please send them in now.

Name \_\_\_\_\_ Phone \_\_\_\_\_

Address \_\_\_\_\_ email \_\_\_\_\_

Please add me on Glencarlyn Updates since I am not currently getting them \_\_\_\_\_ (Yes or leave blank)

I would like to volunteer for one of the upcoming Glencarlyn events \_\_\_\_\_ (Option to add event name)

Make checks payable to **GCA** — send to — Tim Aiken, Treasurer, 111 S. Kensington St., Arlington, VA 22204.

If you aren't sure if you paid, contact Tim at 703-820-0084. Dues increase to \$15 beginning in the 2017-2018 fiscal year.