

An aerial photograph of Arlington County, Virginia, showing a mix of modern glass-walled office buildings and older brick structures. The foreground features a street with a white delivery truck and a few cars. The background is filled with a dense canopy of green trees under a sky with scattered white clouds. A large blue rectangular banner is overlaid across the top half of the image, containing the main title in white text.

Recycling in Arlington County

A smaller blue rectangular banner is positioned in the lower-middle section of the image, overlapping the aerial view of the buildings. It contains white text that provides the name of the organizing association and the date of the event.

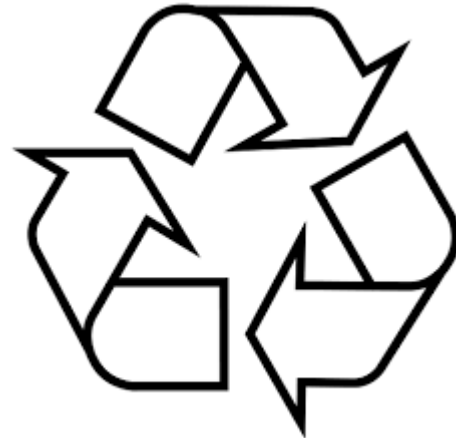
Glencarlyn Civic Association
Monday, April 10th, 2023

Topics for Discussion

- What is recycling?
- Triangle Symbols- What do the numbers mean?
- What to recycle in Arlington
- How does it work in Arlington?
- What happens to my recycling after collection?
- Economics of recycling
- Environmental benefits and fun facts
- Test your recycling knowledge
- Composting overview
- Q + A

What is recycling?

Recycling (n.) – the action or process of converting waste into reusable materials



Triangle Symbols – *What do the numbers mean?*

This design was created in 1970 as part of a student contest tied to the very first Earth Day.

*The numbers you see on recycling triangle symbols **represent the type of resin used to make the plastic.***



1 – PETE – Polyethylene Terephthalate



2 – HDPE – High density Polyethylene



3 – PVC – Polyvinyl Chloride



4 – LDPE – Low-density Polyethylene



5 – PP – Polypropylene



6 – PS – Polystyrene



7 – Other

What To Recycle in Arlington | Single-Family Homes



RECYCLE RIGHT: Items should be **CLEAN + DRY + EMPTY**. Pull apart mixed recyclables.

METAL



metal cans, aluminum foil & trays

MVP

The Most Valuable Player

among recyclable materials continues to be aluminum.

Be sure to recycle them right = clean + dry + empty to ensure their reuse.

Separate mixed materials



Please take glass to County Recycling Drop-Off Centers for optimal recycling

NOT recyclable in single-stream dumpster or cart



- glass • plastic bags • soiled paper • contaminated plastics • light bulbs • styrofoam • ceramics & glassware
- disposable cups • wire hangers • shredded paper • food waste • bio-plastics • household hazardous materials

PLASTIC



plastic bottles & jugs #1-#7 (with lids)



containers, wide-mouth plastics



rigid plastics

PAPER



juice boxes, milk, wine & broth cartons



cereal & food boxes, cardboard



mixed paper, newspaper, books, magazines

BATTERIES



FIRE HAZARD

Only **ALKALINE** batteries can go in **TRASH**. All other batteries should be treated as Household Hazardous Materials, disposed at the HHM Facility or battery drop-off locations throughout the County.

Use this REPOSTABLE sticker on all non textile surfaces – including stainless steel – without damage.

How does it work in Arlington?

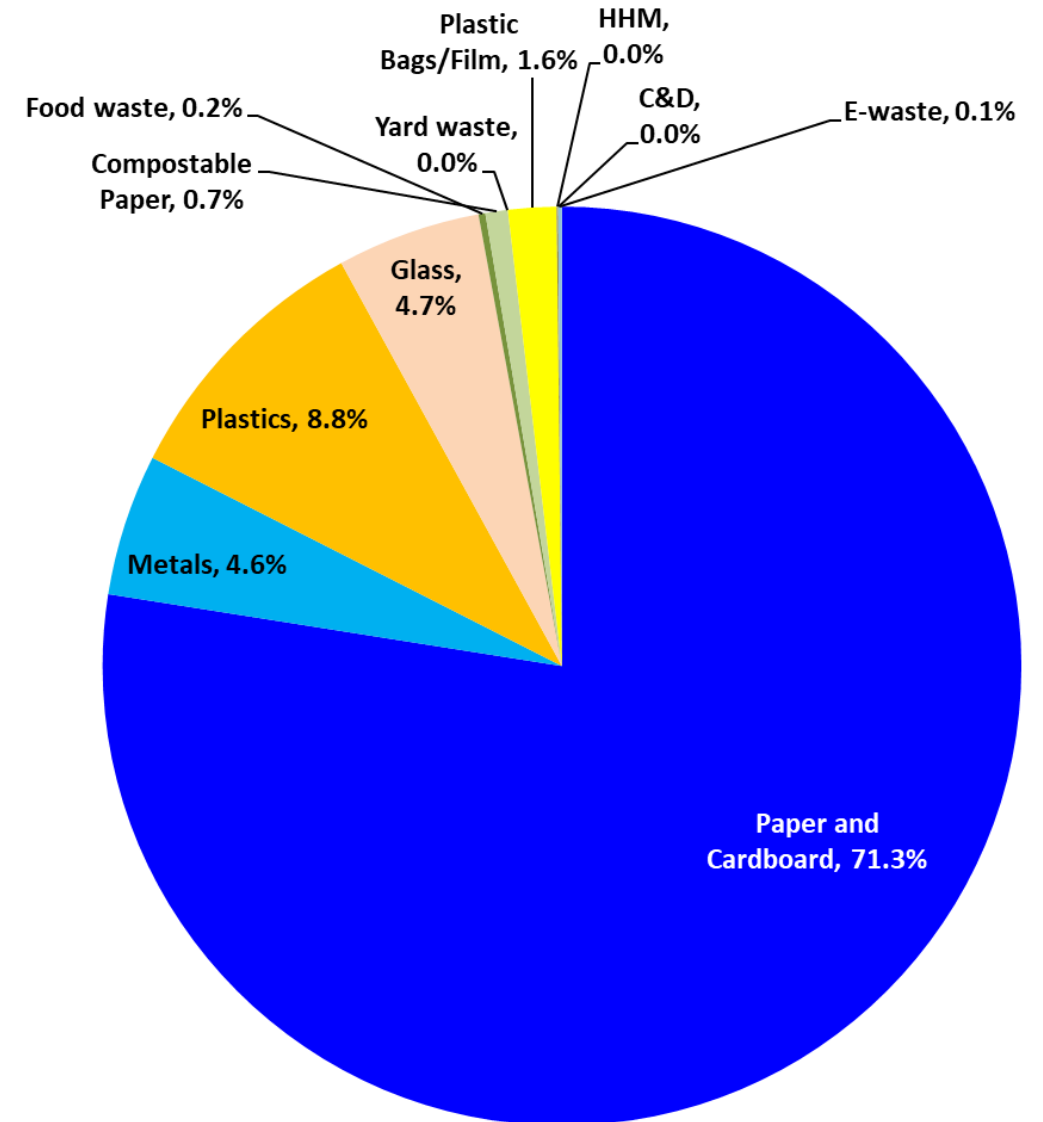


What happens to my recycling after collection?

1. Arlington County contractors collect recycling from the curb
2. Collected materials are taken to a Materials Recovery Facility (MRF)
3. Arlington pays a “tipping fee” to the MRF
 - Fee is calculated based on commodities prices and approximate composition of the load based on previous waste audits
4. MRF sorts, processes and markets the materials for sale
5. After materials are sold, a percentage of profits are returned to the county as credit at the MRF

Economics of Recycling

- Arlington's average recycling collection consists of approximately 90% recyclable materials
 - This means only 10% of what's put in Arlington's recycling doesn't belong
- Recycling commodities sales are able to be credited to cover tipping fees where trash collection cannot
- Bottom line: **Recycling costs less than trash**
 - Commodities prices are always fluctuating
 - Recycling in Arlington makes economic sense



Environmental benefits of recycling

- Reduces amount of waste sent to landfills/incinerators
- Conserves natural resources like timber, water and minerals
- Reduces greenhouse gas emissions that contribute to global climate change
- Helps sustain the environment for future generations
- Reduces need to process virgin materials, saving energy



Fun facts

- If U.S. recycling levels reached 75% it would be the equivalent, in CO2 reduction, of removing 55 million cars from U.S. roads each year and would generate 1.5 million new jobs.
- Five plastic bottles (PET) recycled provides enough fiber to create one square foot of carpet or enough fiber to fill one ski jacket.
- Every three months, Americans throw enough aluminum into landfills to build our nation's entire commercial air fleet.



Test your knowledge – true or false?



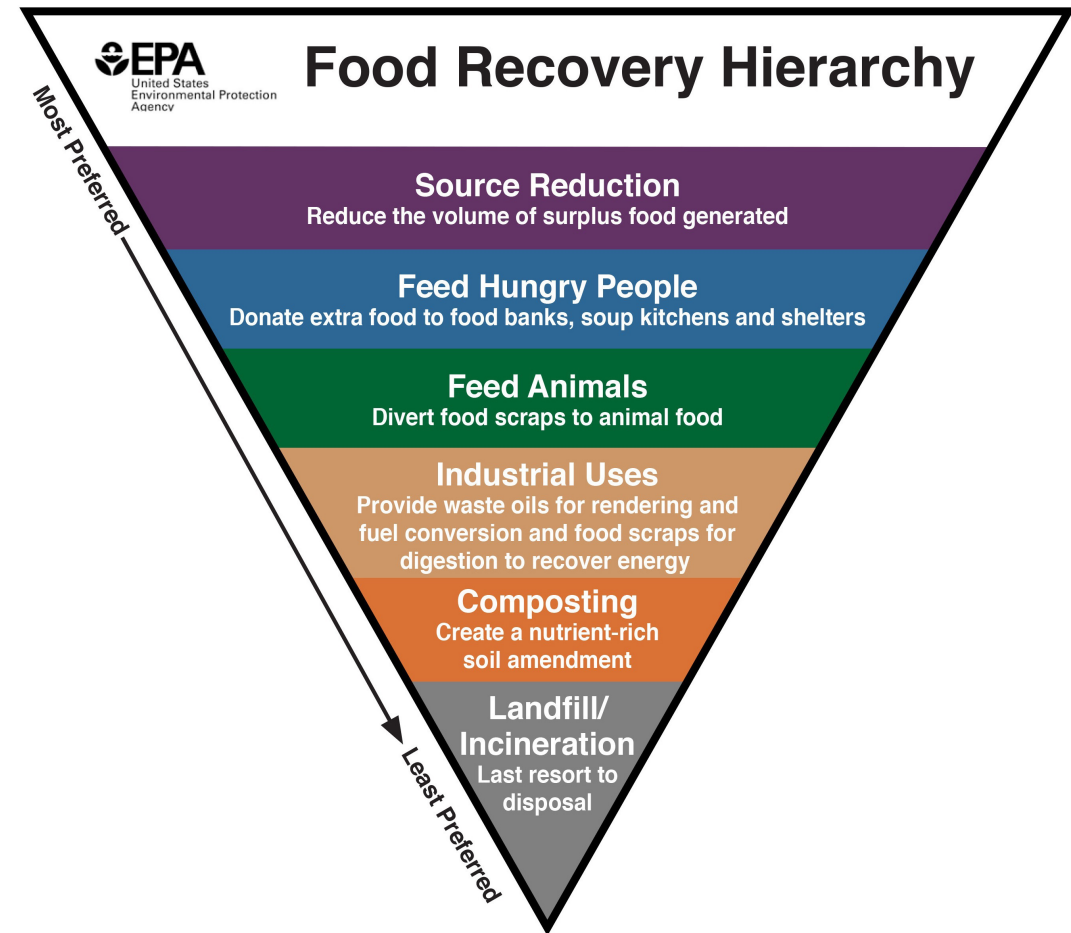
Test your knowledge - results



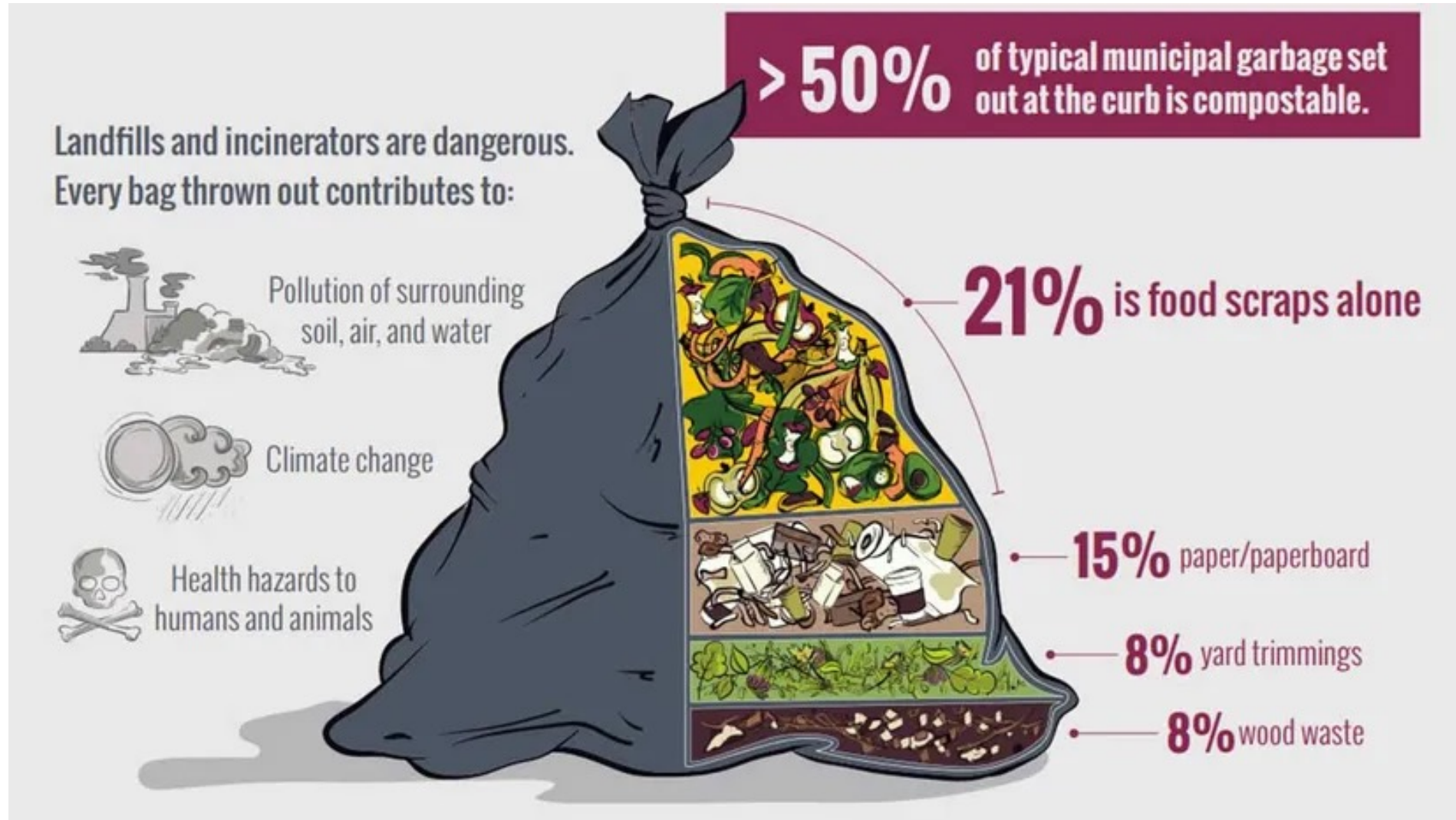
The Benefits of Composting

What are some benefits to composting?

- Helps reduce overall food waste
- Conserves energy and resources
- Reduces methane gas emissions



How much is being thrown away?



Composting in Arlington

Food Scraps Collection in Arlington County begins September 6th on your regular weekly trash pickup day. Here's how:



COLLECT
Collect food scraps in a counter-top pail using compostable bags



PLACE CURBSIDE
Place bags of food scraps in green organics cart and place cart at curb on your pickup day



WEEKLY PICKUP
Crews will pick up the food scraps weekly



- A good rule of thumb for composting in Arlington is: **If it grows, it goes!**
- Greasy pizza boxes and soiled paper products like napkins and paper towels are also accepted
- “Compostable” hard plastics (i.e. utensils, takeout containers) will not be accepted
- Don't receive county curbside service? Compost can also be taken to Arlington's Earth Recycling Yard

Questions

